



Airways, hila, and mediastinum

How to confidently identify the carina

What will I gain from this video?

After watching this video, you will be able to confidently assess the ETT tube tip position.

How to identify the carina on the PA

STEP 1



How to identify the carina on the PA

STEP 2



How to identify the carina on the PA

STEP 3



How to identify the carina on the PA

STEP 4



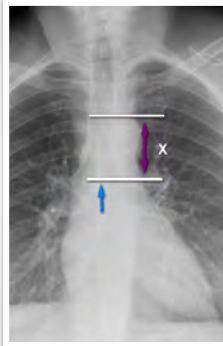
How to identify the carina on the PA

STEP 5



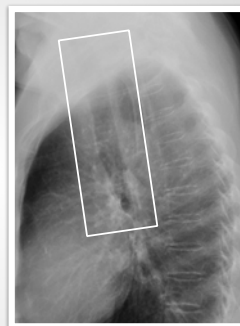
How to identify the carina on the LAT

STEP 1



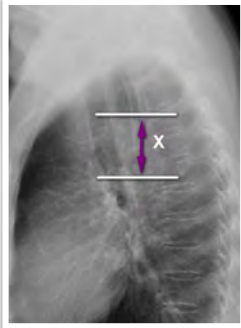
How to identify the carina on the LAT

STEP 2

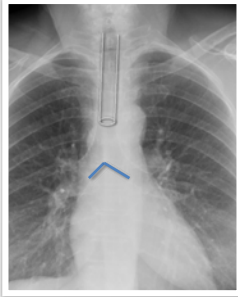


How to identify the carina on the LAT

STEP 3



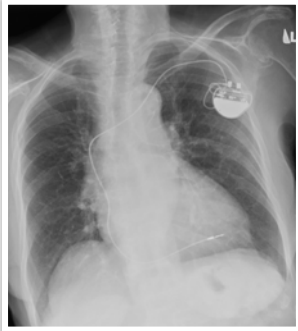
The tip of the ETT should lie 5 cm above the carina!



Find the carina: 1



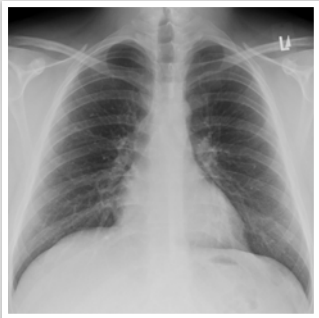
Find the
carina: 2



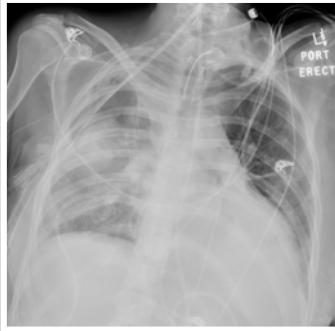
Find the
carina: 3



Find the
carina: 4



Airway tube



Identification of the carina is an essential skill needed for safe clinical management of intubated patients.

If you don't see the carina clearly, you can still extrapolate its position.
